



**MASALTA®**

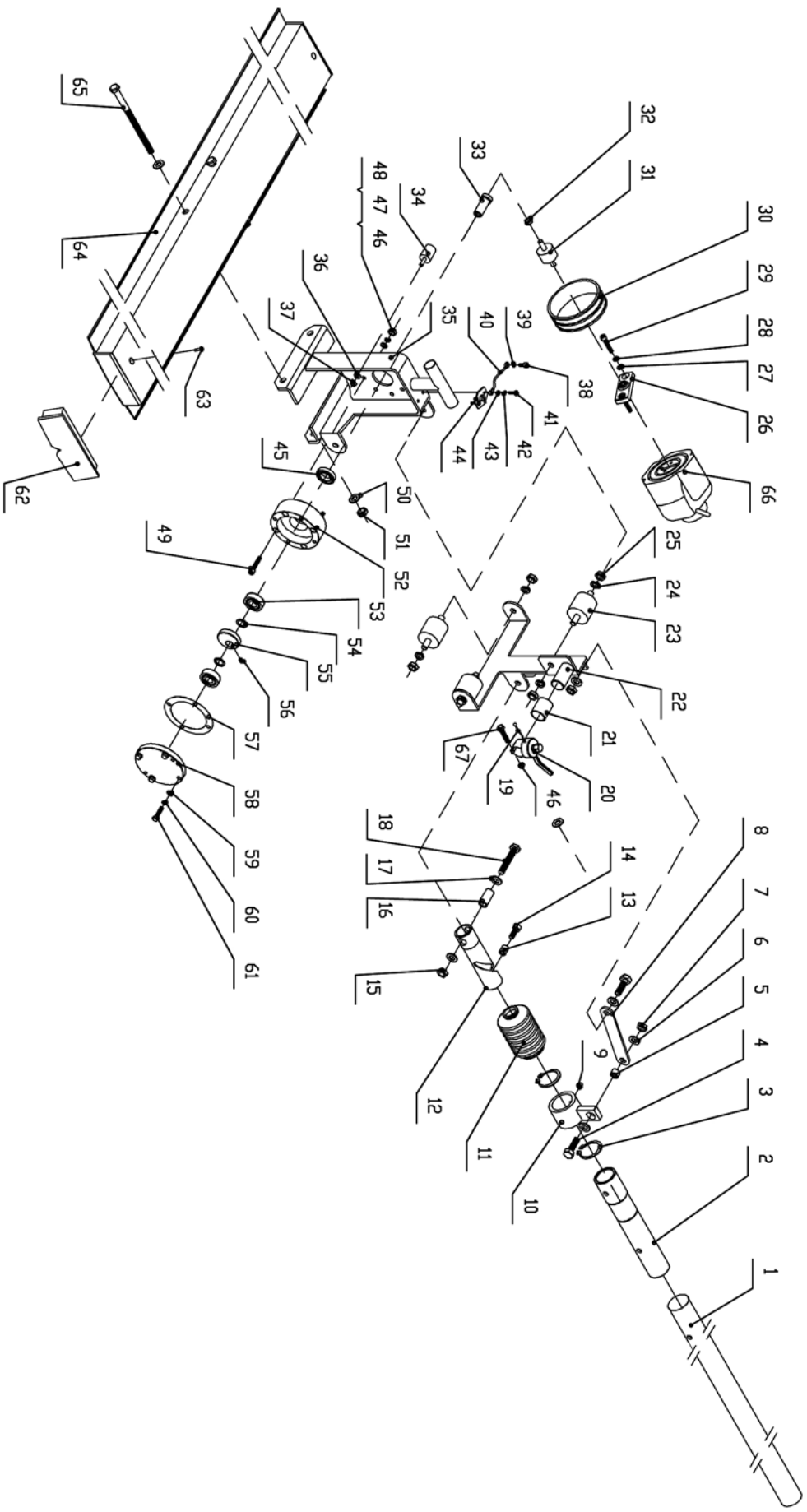


# PARTS LIST

## VIBRATING SCREED

### MMD





## MMD PARTS LIST

ITEM NO.	PART NO.	DESCRIPTION	QTY
1	MM25.04.00	HANDLE PIPE	1
2	MM25.03.00	HANDLE JOINT	1
3	38-GB/T894.1-1986	RETAINING RING 38	2
4	M10*35-GB/T5783-2000	HEX HEAD SCREW M10x35	2
5	MM25.03.08A	SLEEVE	1
6	10-GB/T97.1-2002	FLAT WASHER 10	4
7	M10-GB/T889.1-2000	LOCK NUT M10	2
8	MM25.03.02A	PULLING PLATE	1
9	M6-GB1152	GREASE FITTING M6	1
10	MM25.03.03A	SLEEVE,JOINT	1
11	MM25.03.04	RUBBER CAING	1
12	MM25.03.06A	HELICAL CASING	1
13	MM25.03.05	STRUT	1
14	MM25.03.09	SOCKET HEAD SCREW	1
15	M10-GB/T889.1-2000	LOCK NUT M10	1
16	MM25.03.07A	SLEEVE	1
17	10-GB/T97.1-2002	FLAT WASHER 10	2
18	M10*60-GB/T5783-2000	HEX HEAD SCREW M10x60	1
19	MM25.06.00	CONTROL CABLE	1
20	MM25.09.00	THROTTLE CONTROL	1
21	MM25.06.01	NYLON SLEEVE	1
22	MM25.02.02	BRACKET,SIDE	1
23	MM25.02.03	VIBRATION DAMPER	3
24	10-GB/T93	SPRING WASHER 10	6
25	M10-GB/T889.1-2000	LOCK NUT M10	6
26	MM25.01.08	COUPLING BAND	1
27	6-GB/T97.1-2002	FLAT WASHER 6	2
28	6-GB/T93	SPRING WASHER 6	2
29	M6*20-GB/T5783-2000	HEX HEAD SCREW M6x20	2
30	MM25.01.08	PROTECTIVE COVER	1
31	MM25.01.01A	FLEXIBLE CONNECTOR	1
32	M8-GB/T6174	HEXAGON NUT M8	1
33	MM25.01.04A	SHAFT	1
34	MM25.01.10	VIBRATION DAMPER	4
35	MM25.00.20	BRACKET	1
36	6-GB/T93	SPRING WASHER 6	4
37	M6-GB/T889.1-2000	LOCK NUT M6	4
38	M5*12-GB/T70	SOCKET HEAD SCREW M5X12	4
39	5-GB/T93	SPRING WASHER 5	1
40	MM25.07.00	GROUND CABLE	1
41	M4*16-GB/T818	SCREW M4X16	2

To be continued

## MMD PARTS LIST

ITEM NO.	PART NO.	DESCRIPTION	QTY
42	4-GB/T93	SPRING WASHER 4	2
43	4-GB/T97.1-2002	FLAT WASHER 4	2
44	MM25.10.00	HALT SWITCH	1
45	FB 15 30 7-GB/T13871	SEAL RING	1
46	M6-GB/T889.1-2000	LOCK NUT M6	5
47	6-GB/T93	SPRING WASHER 6	4
48	6-GB/T97.1-2002	FLAT WASHER 6	4
49	M6*60-GB/T5783-2000	HEX HEAD SCREW M6X60	4
50	10-GB/T97.1-2002	FLAT WAHSER 10	4
51	M10-GB/T889.1-2000	LOCK NUT M10	2
52	MM25.01.02A	BEARING HOUSING	1
53	6202 2Z 3C	BEARING	2
54	MM25.01.07A	GASKET	2
55	MM25.01.03A	ECCENTRIC BLOCK	1
56	M6*10-GB78	SOCKET HEAD SCREW M6X10	1
57	MM25.01.06A	SEAL WASHER	1
58	MM25.01.05A	BEARING COVER	1
59	6-GB/T97.1-2002	FLAT WASHER 6	4
60	6-GB/T93	SPRING WASHER 6	4
61	M6*30-GB/T5783-2000	HEX HEAD SCREW M6X30	4
62	MM25.05.02	PLUG	2
63	3.2×10-GB/T12618-1990	RIVET 3.2X10	2
64	MM25.05.01A	SCREED BLADE	1
65	M10*160-GB/T5782-2000	HEX HEAD SCREW M10X160	2
66	HONDA GX25	ENGINE	1
67	M6*30-GB70	SOCKET HEAD SCREW M6X30	1



*Distributed By*



**MASALTA ENGINEERING CO., LTD**

Add: Weisi Road, Baohe Industrial Estate, Hefei, China  
Tel: 86-551-4846600, 4846601 Fax: 86-551-4846616  
E-mail: [sales@masalta.com.cn](mailto:sales@masalta.com.cn), [masalta@mail.hf.ah.cn](mailto:masalta@mail.hf.ah.cn),  
[Http://www.masalta.com.cn](http://www.masalta.com.cn)

Version: 01/10/01

## **ОФИЦИАЛЬНЫЙ ДИЛЕР В УКРАИНЕ:**

[storgom.ua](http://storgom.ua)

## **ГРАФИК РАБОТЫ:**

Пн. – Пт.: с 8:30 по 18:30

Сб.: с 09:00 по 16:00

Вс.: с 10:00 по 16:00

## **КОНТАКТЫ:**

+38 (044) 360-46-77

+38 (066) 77-395-77

+38 (097) 77-236-77

+38 (093) 360-46-77

Детальное описание товара: <https://storgom.ua/product/privod-vibroreiki-masalta-mmd-4.html>

Другие товары: <https://storgom.ua/vibroreiki.html>